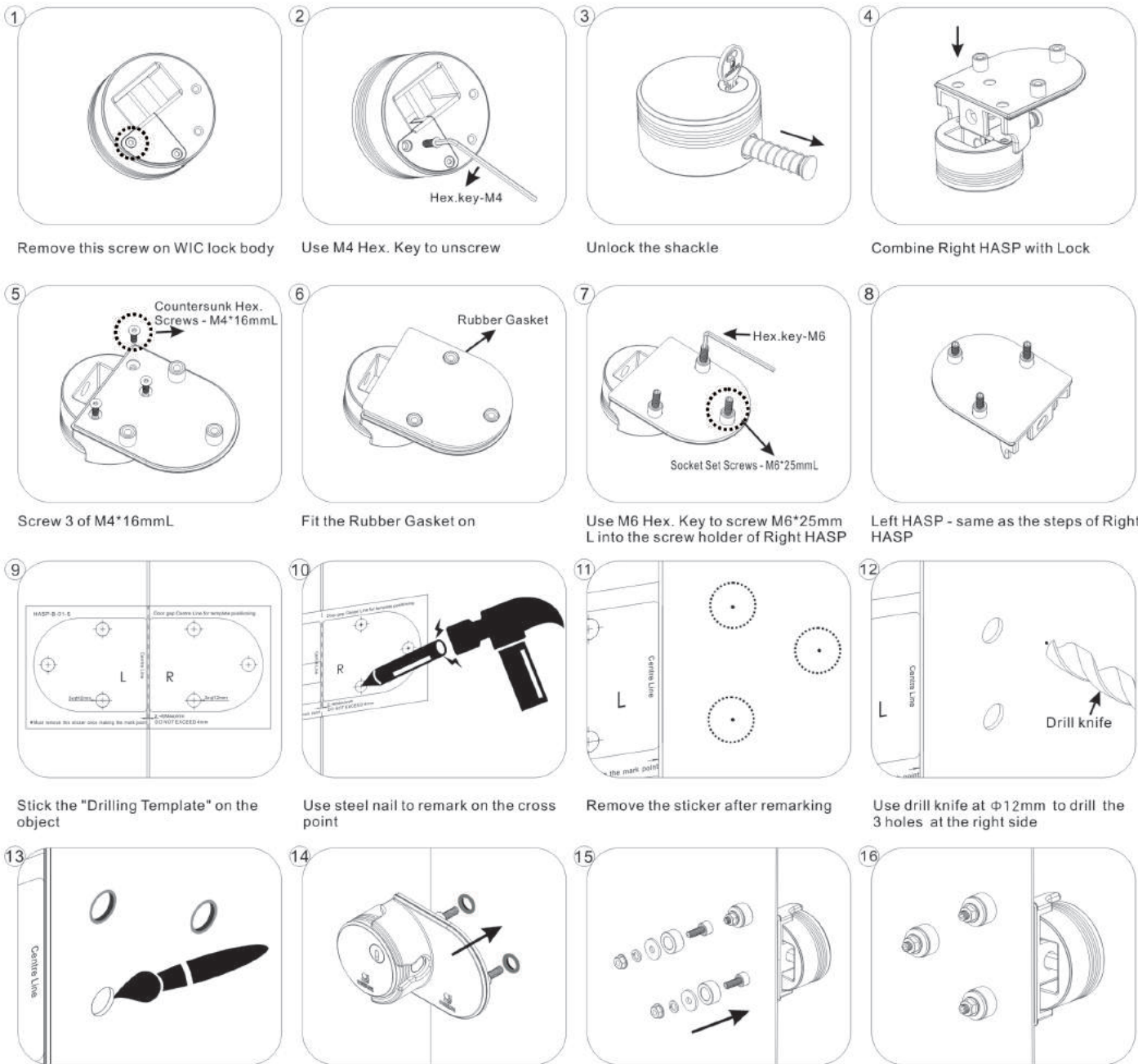
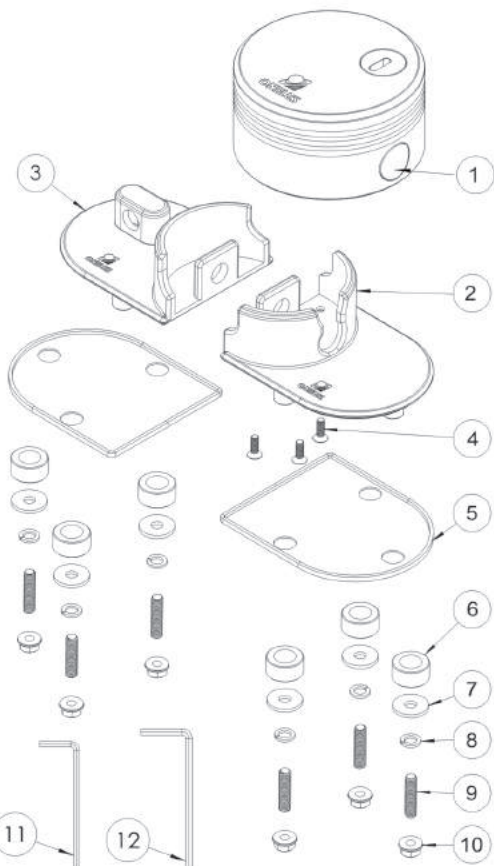


Installation Manual - WIC-B-01

Option 1: LOCK FIXED on the HASP



Remove this screw on WIC lock body

Use M4 Hex. Key to unscrew

Unlock the shackle

Combine Right HASP with Lock

Screw 3 of M4*16mmL

Fit the Rubber Gasket on

Use M6 Hex. Key to screw M6*25mm L into the screw holder of Right HASP

Left HASP - same as the steps of Right HASP

Stick the "Drilling Template" on the object

Use steel nail to remark on the cross point

Remove the sticker after remarking point

Use drill knife at $\Phi 12\text{mm}$ to drill the 3 holes at the right side

Paint the holes to anti-rust

Fit the 3 screw holders of Right HASP into the holes

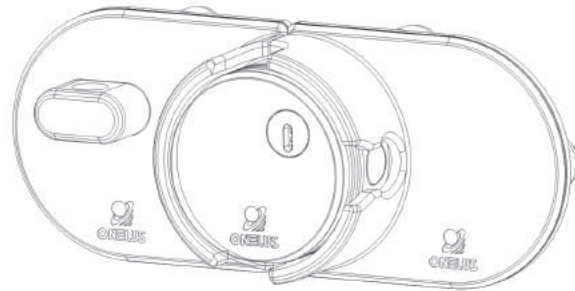
Assemble in order by the showing materials

Done! Same steps for the Left HASP

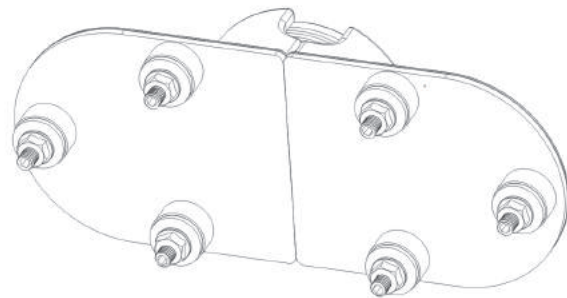
NO	Item	Qty	NO	Item	Qty
1	WIC - LOCK BODY	1	7	Washer - M6 19*2mmL	6
2	Right HASP-B-01	1	8	Spring Washer - M6	6
3	Left HASP-B-01	1	9	Socket Set Screws - M6*25mmL	6
4	Countersunk Hex. Screws - M4*16mmL	3	10	Flanged Nut - M6	6
5	Rubber Gasket of HASP-B-01	2	11	Hex. Key - M4	1
6	Grommet - 20*10mmL	6	12	Hex. Key - M6	1

WIC-B-01

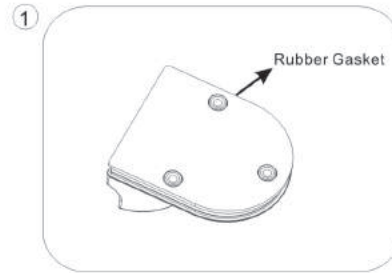
Option 2: LOCK UNFIXED on the HASP



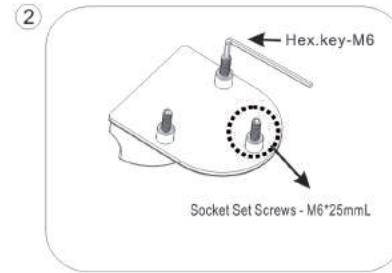
Front



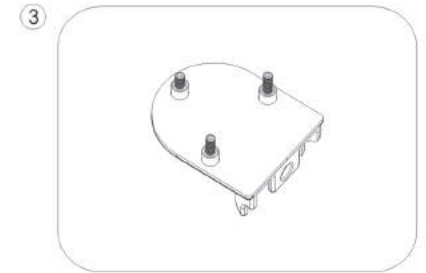
Back



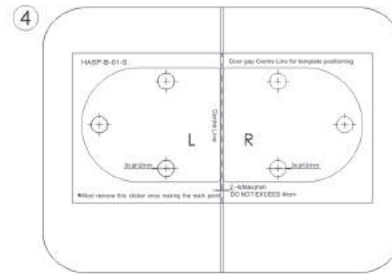
Fit the Rubber Gasket on



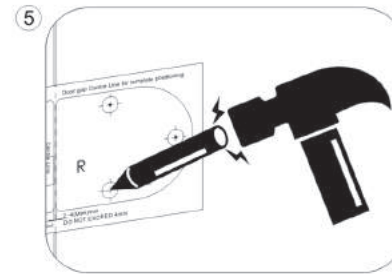
Use M6 Hex. Key to screw M6*25mmL into the screw holder of Right HASP



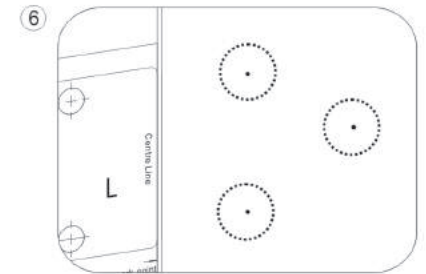
Repeat these steps for Left HASP



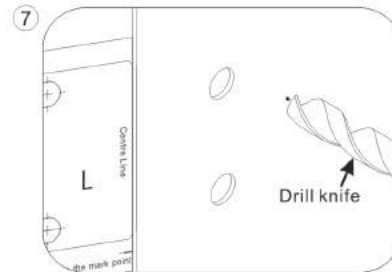
Stick the "Drilling Template" on the object



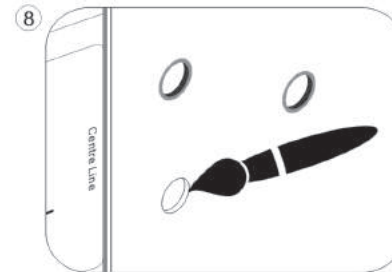
Use steel nail to remark on the cross point



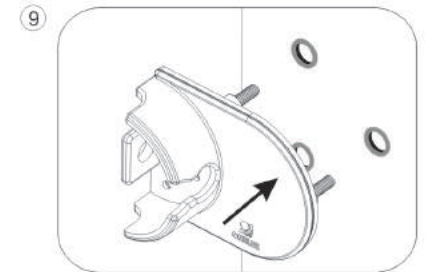
Remove the sticker after remarking



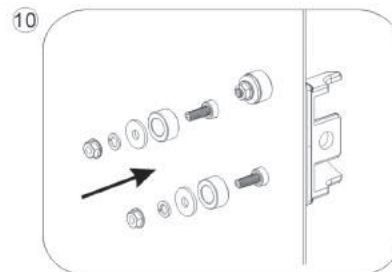
Use drill knife at $\Phi 12\text{mm}$ to drill the 3 holes at the right side



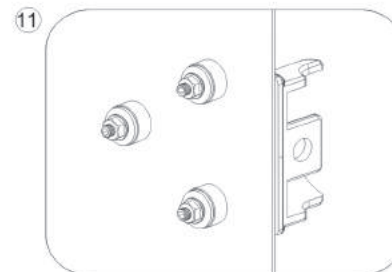
Paint the holes to anti-rust



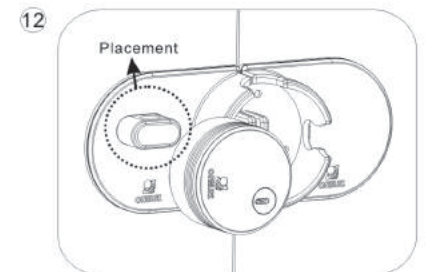
Fit the 3 screw holders of Right HASP into the holes



Assemble in order by the showing materials



Screw tightly and it's Done!
Same steps for the Left HASP



Could put the lock on the holder temporary instead of carry